

Spring 2026

# MANH CHOH NEWSLETTER

## 2025 Mine Operational Performance



Aerial shot of the North Pit.

Through 2025, mining activities progressed toward the bottom of the Manh Choh North Pit. During this period, additional ore was identified below the original pit design, resulting in increased ore recovery beyond plan.

Operations maintained steady production despite seasonal challenges, including winter conditions. Performance remained consistent across all material categories, supported by strong coordination between all mining business partners.

The operation closed out 2025 exceeding planned ore production and remains well-positioned for continued success moving into 2026.

### Manh Choh Mine Production Summary January to December 2025

#### Ore Production

- Total Ore Mined (Jan – Dec 2025): 1,204,825 tons

#### Waste Movement

- Total Waste Mined (Jan – Dec 2025): 12,428,055 tons

#### Total Material Movement

- Total Material Mined (Ore + Waste): 13,632,880 tons

### Operational Performance (Q1 2026)

- Mining activities in early 2026 have focused on completing the North Pit while starting the transition to backfilling operations. Progress in the North Pit has been slower than planned due to winter conditions and the continued recovery of additional ore below the original pit design.
- Despite these challenges, production performance has remained steady, with ore tons exceeding budget in the first quarter. Coordination between all mining business partners continues to support consistent delivery across all material categories.

The operation remains on track to achieve the 2026 mine plan, with a positive outlook as conditions improve and mining transitions into the next phase.

### 2025 Ore Transportation Performance

Ore transportation concluded the year ahead of plan, with strong performance across the transport operation despite challenging winter conditions.

- Total Ore Transported (Jan – Dec 2025): Wet tons – 1.05 million

The team demonstrated strong coordination and resilience, successfully maintaining transportation rates and achieving planned targets through adverse seasonal conditions.

### 2026 Q1 Performance

The first quarter of 2026 has started on a positive trajectory, with continued consistency in ore transportation.

- Total Ore Transported (Q1 2026 to date): Wet tons – 208k

Performance to date reflects a strong start to the year, positioning the operation well to meet yearly targets.

Mining activities in early 2026 have focused on completing the North Pit while starting the transition to backfilling operations



# Employee Spotlight: Dale Curtis, Senior Health and Safety Specialist



Kinross employee Dale Curtis lives in Tok and is the Senior Health and Safety Specialist at Manh Choh. He is a wild bird enthusiast, enjoys digging for crystals and gems and loves being outdoors searching for edible plants and mushrooms.



*A bird enthusiast, Dale Curtis enjoys the outdoors.*

Dale recently received his Occupational Hygiene and Safety Technician and Safety Trained Supervisor certifications from BCSP, completed and passed his MSHA Blue Card training and will be pursuing his Occupational Health and Safety degree this summer.

## Earth Day: Responsible Mining for Today and Tomorrow

Each year on April 22, Earth Day serves as a global reminder of our shared responsibility to protect the environment and ensure that today's activities do not compromise the needs of future generations. At Manh Choh, Earth Day is more than a date on the calendar, it reflects the principles that guide how we operate every day across our site.

Mining plays an essential role in supporting communities and industries worldwide, from enabling renewable energy technologies to providing materials used in everyday life. At the same time, it comes with a responsibility to manage land, water and natural resources thoughtfully and transparently. Manh Choh is committed to responsible mining practices that minimize environmental impacts, protect ecosystems and create long-term value for communities and stakeholders.

Environmental stewardship is embedded into our operations from exploration through closure. This includes careful water management, responsible waste and tailings handling, progressive reclamation and continuous monitoring to meet or exceed regulatory requirements. By integrating environmental considerations into operational planning, we work to reduce risk while supporting sustainable outcomes.

Earth Day also highlights the importance of innovation and continuous improvement. Across the company, teams are implementing initiatives to improve energy efficiency, reduce greenhouse gas emissions, enhance biodiversity protection and strengthen closure and reclamation planning. These efforts support our broader sustainability goals and reflect a commitment to measurable, long term environmental performance.

Equally important is the role our employees play. Day-to-day decisions, how we manage materials, maintain roads, handle water or respond to changing site conditions, directly influence environmental outcomes. Earth Day is an opportunity to recognize the dedication and professionalism of Manh Choh employees who consistently prioritize environmental responsibility in their work.

Partnership is another key element of responsible mining. We work closely with local communities, Indigenous groups, regulators and other stakeholders to understand environmental values, incorporate traditional knowledge where appropriate and align reclamation and closure plans with long-term land use objectives. These relationships help ensure that environmental decisions are informed, respectful and durable.

As we observe Earth Day, it is also a time to look ahead. Climate change, evolving regulations and rising expectations around sustainability continue to shape the mining industry. We remain focused on adapting to these challenges through sound environmental management, strong governance and a culture of accountability.

Earth Day reminds us that protecting the environment is not a one day effort, but it is an ongoing commitment. Through responsible practices, collaboration and continuous improvement, we are working to ensure that mining today contributes positively to the landscapes, communities and ecosystems of tomorrow.

Reclamation efforts at Manh Choh are already underway. The Environmental Team is in charge and coordinated seeding of more than 100 acres to aid in stabilization.



*Operations maintained steady production despite seasonal challenges.*

# Ore Transportation – MC Access Road



Mine vehicles getting a little extra shine at the Wheel Wash Station.



Happy Spring, everyone! As the snow begins to melt and the days get longer, we're excited to welcome a new season of work, progress and a little extra sunshine along the way. This year's Spring Newsletter lands near Earth Day 2026, which feels like the perfect time to reflect on the miles we've traveled – literally – and the work we're doing to keep our roads running safely and responsibly.

## A Year in Motion

The numbers from this past season are impressive:

- 22 million miles traveled

That's the equivalent of almost 900 trips around the Earth – which means if someone forgot their lunch, there were plenty of opportunities to go back and grab it!

A huge thank-you to everyone who helped keep operations moving safely and efficiently.

These milestones reflect the hard work, dedication and teamwork that keep the MC Access Road operating smoothly year-round.

## 2026 Spring Line Out

As we transition into spring operations, the focus turns to maintenance and road performance. This season's priorities include:

- Ditch Cleaning – Clearing drainage paths to keep water moving where it should.
- Rock Establishment – Strengthening road surfaces and improving stability.
- Check Dams – Supporting proper water control and protecting surrounding areas.
- Crowns & Road Drainage – Maintaining proper road shape to help water run off efficiently.
- Mag Chloride Application – Dust control measures to improve driving conditions and visibility.

## Wheel Wash Station

As part of ongoing efforts to prioritize road safety and environmental responsibility, Manh Choh operates a dedicated Wheel Wash Station for site vehicles.

With Earth Day arriving alongside our spring kickoff, it's a great reminder that maintaining our vehicles responsibly helps protect the environment around us. From proper drainage to dust control, every improvement we make helps reduce impacts and keep the surrounding land in great shape.

Here's to a productive, safe and successful Spring 2026 season.



## Manh Choh Celebrates International Woman's Day Give to Gain



*The Classroom Gramma, Carol Wentz, with one of the kindergartners.*

International Woman's Day (IWD) has been around for over 100 years. It was instituted to celebrate the accomplishments of women and raise awareness of woman's issues. On March 4, Manh Choh, together with the women of Kiewit, celebrated IWD with a luncheon both at the Manh Choh Campus and at the Manh Choh Mine Site.

While our guests ate lunch prepared right here at our campus kitchen, they heard an inspiring talk from Deb Alsup. Deb is a wife, mother and the kindergarten teacher at Tok School. She does so much for her community, we wanted to celebrate her and get her take on the Give to Gain 2026 theme.

Give to Gain emphasizes the power of reciprocity and support. When people, organizations and communities give generously, opportunities and support increase. Deb used her time to highlight many women in Tok who give generously of their time. Some of those women were in the audience and were able to hear the accolades.

Deb brought two guests with her to showcase. The first was Carol Wentz. Carol was the first Gramma in a program in Deb's class that was truly a Give to Gain project. It brought grandmothers into the classroom for the benefit of both the children and Carol. Her second guest was Aubrey Dyer. Aubrey is 12 years old and has started a club to meet and support one another. They fundraise for different charities and currently have sponsored a child through an aid organization. Go Aubrey!

We felt it important that we not only celebrate women, but also educate about an important woman's health topic – CPR. Some alarming statistics were brought to our attention about the issue of delayed response to woman when administering CPR. A study by the American Heart Association detailed a gap in performing CPR by men on women due to the proximity of a woman's breasts. Only 39% of women received bystander CPR in public, compared to 45% of men. We decided to use this lunch to raise awareness of this issue and offer some practice on an anatomically correct Annie. Education is everything, especially when it includes hands-on practice.

For the second year, we were able to simulcast our guest speaker's presentation to the participants at the mine site. They may be up on top of the beautiful Tetlin Hills, but we can use technology and Give to Gain!

Deb ended her presentation with encouragement. She told us that she had a candle in her home that she would light to remind her that it just takes a little light to brighten the whole room. She spoke of the encouragement she gets from going to a local candlelight service – and no matter how dark the room is, as each candle is lit, the room gets brighter and brighter. She encouraged us to brighten the rooms we occupy. She let us know that sometimes, depending on where we are in life, we may be the one who needs to light other's candles or sometimes we may need ours lit. She truly captured the theme of Give to Gain.

## Celebrating MAPTS Graduation in Delta Junction



*MAPTS students gain hands-on experience operating heavy equipment while learning responsible mining practices.*

We attended the latest University of Alaska Fairbanks Mining and Petroleum Training Service (MAPTS) graduation in Delta Junction, celebrating a diverse group of students taking the next step in their careers.

This cohort attended rural-focused heavy equipment training classes, bringing together participants ranging from recent high school graduates to career-changing new miners. Notably, half of the class came from Southwest Alaska communities impacted by last year's typhoon, with many planning to take their new skills home to support rebuilding efforts.

Students gained hands-on experience operating heavy equipment while learning responsible mining practices. One graduate shared how meaningful it was to see how miners work respectfully with the land, highlighting practices like using duck ponds during refueling.

We were proud to see familiar faces among the graduates, including a Manh Choh scholarship recipient and a former contractor pursuing a new career path as Manh Choh moves toward closure.

The program drew strong interest, with 28 applicants for just 10 spots, prompting plans for additional sessions. The graduation was also attended by the Hecla's Greens Creek team and two University of Alaska Regents, highlighting the importance of industry and education partnerships.

We closed out the event with a contribution to support MAPTS, reinforcing our commitment to workforce development and creating opportunities for Alaskans across the state.

# Girl Scout Troop #325



Each March, we celebrate International Women’s Day. This year, Manh Choh and Beacon OHSS were eager to include Tok’s future leaders – the young ladies serving in Farthest North Girl Scout Troop #325. The scouts learned the four mechanisms of heat exchange, signs and symptoms of hypothermia and accurately identified and differentiated cold stress versus mild, moderate and severe hypothermia.

The scouts performed their newly learned wilderness first-aid skills utilizing a camping pad, wool blanket, emergency foil blanket and high calories snacks. In each hypothermia scenario, the scouts were able to accurately distinguish consciousness, shivering, movement and alertness and provide the appropriate treatment.

The future of Tok looks bright as we observed these adventurous future leaders demonstrate problem-solving as a team and critical thinking, all with compassion and kindness.

The hypothermia lecture was the first step in earning the coveted Girl Scout Arctic Survival Badge. Next month, the scouts will learn about preventing and recognizing frostbite.

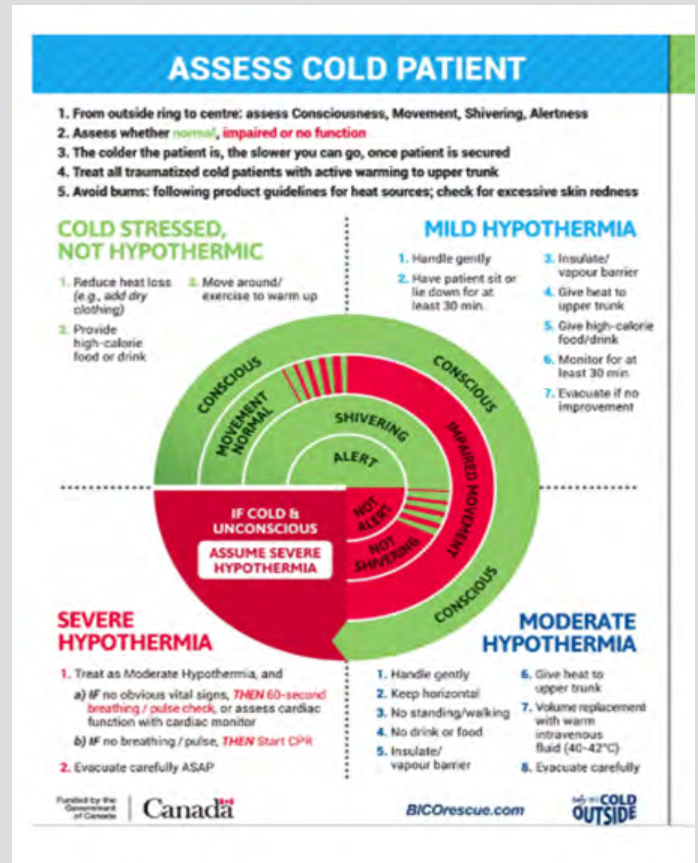
If you have experience in an area listed below and would like to assist our local Girl Scout Troop in preparing for their ultimate overnight camping challenge, we can provide information on how to get involved!



## Arctic Survival Badge

Do six of the following activities, including the starred requirements:

- Find out what hypothermia and frostbite are. Know the steps to prevent them in different weather and water conditions. Know the procedures to take if either of these occur. Demonstrate them. Know basic compass and map skills and demonstrate them by following an orienteering course.\*
- Invite a Wildlife Specialist to a meeting to inform you about such things as bear protection and wildlife awareness (as appropriate to each area)\*.
- What is stress? How can stress interfere with survival? Discuss feelings such as fear and loneliness. How do you deal with tensions like thirst, hunger and pain?
- Shelter, food, water, warmth and clothing are basic survival necessities. Show how you can provide these for yourself and consider their order of importance.
- Arctic wilderness provides its own challenges. Think about and discuss characteristics of water, plant life, geographic conditions and weather of the arctic that would help or hinder you.
- Make a basic survival kit. Know how to use each item properly.
- Plan and carry out an overnight camping trip to implement the survival skills you have learned. (Remember to turn in your troop trip application and a list of what your survival kit consists of).



# Health and Safety

Manh Choh conducted its required eight-hour annual refresher training with the full team and select business partner employees in February.

The training included first aid and Hands-Only CPR instruction, as recommended by the American Heart Association.

This training is valuable not only in the workplace but also at home. According to the American Heart Association, more than 70% of out-of-hospital cardiac arrests occur in homes.

There are two steps to Hands-Only CPR:

**Hands-Only CPR has been shown to be as effective in the first few minutes as conventional CPR for cardiac arrest at home, at work or in public.**

**Hands-Only CPR has just two easy steps, performed in this order:**

**1**



Call 911 if you see a teen or adult suddenly collapse.

→

**2**



Push hard and fast in the center of the chest to the beat of a familiar song that has 100 to 120 beats per minute.

## Indigenous Appreciation Games

At the University of Alaska Fairbanks's Indigenous Appreciation Games, we helped support a celebration of Alaska Native culture, community and tradition. Through our Giving Day challenge last March, we joined others in helping bring this season's Indigenous Appreciation N7 jerseys to life. Paired with performances by the Troth Yeddha' Dance Group, the event reflected what's possible through strong community partnership – and we're grateful to be part of that shared effort.



*Kinross Alaska employees helped celebrate Native culture, community and tradition.*

## Save the Date

**June 22:  
Tok Family & Friends BBQ**

**June 23:  
Delta Family & Friends Picnic**

# Investing in Community

External Affairs, along with other members of our Manh Choh Team, have had an active and productive first quarter, engaging with communities and partners across the region. Our team has attended a variety of important meetings, including those with the Delta City Council, Tok Chamber of Commerce, Tetlin Village Council and the Community Advisory Committee. These ongoing conversations help ensure strong communication and collaboration with our local stakeholders.

This winter, we hosted a series of community meetings in Tok, Tanacross, Tetlin, Northway and Mentasta. During these gatherings, we shared updates on operations – which continue to run smoothly – and discussed the process as we move toward closure. These meetings remain a key part of our commitment to transparency and community engagement.

We also celebrated International Women’s Day at both the campus and the mine site in partnership with Kiewit. This year’s event featured a local schoolteacher as our guest speaker, highlighting the impact and leadership of women in our communities.

For the third consecutive year, our team participated in welcoming Tanana Chiefs Conference attendees by serving ice cream at the Fairbanks Chamber of Commerce event – an opportunity we value for connecting with attendees in a fun and meaningful way.

Community involvement continues to be a priority for our staff. Team members participated in the Delta Elementary Science and STEM Fair, supporting student learning and curiosity. Additionally, staff traveled to Tetlin School to deliver a Junior Achievement financial literacy class, working alongside local teachers to provide valuable education for students.

We also supported community education efforts by assisting Beacon employee Jamie Ratcliff as she taught Girl Scout Troop #325 about hypothermia awareness and safety.

Through these efforts, External Affairs remains dedicated to building strong relationships, supporting education and contributing positively to the communities we serve in our footprint area.



Serving ice cream at the Tanana Chiefs Conference Reception.



Supporting the Mining and Petroleum Training Service.



Saving lives through CPR.



Learning how special rocks are.



Celebrating our MAPTS graduates.



Enjoying Military Appreciation Night with the Fairbanks Ice Dogs.



UAF graduate, Richie S., returns to share mining expertise.

**Mailing Address:**

PO Box 9  
Tok, Alaska 99780

**Physical Address:**

1313 Alaska Hwy  
Tok, Alaska 99780

Spring – 2026

# PROJECT TIMELINE

