

February 2025

Manh Choh

Winter Community Meetings



Who is Kinross Alaska?

- Fort Knox, Gil, and Manh Choh
 - Gil- a satellite deposit on Fort Knox property
 - Manh Choh- a joint venture with Contango & partnership with the Native Village of Tetlin near Tok
- Committed to Alaska for over 28 years
 - Manh Choh mine life until 2028
- Values based company
 - Putting People First
 - Outstanding Corporate Citizenship
 - Rigorous Financial Discipline
 - High Performance Culture
- Safety is Kinross' highest priority – safety of employees, contractors and the public
- Prioritizes local hire and investment
- 2030 GHG reduction goals and net zero by 2050



**Kinross Manh Choh received the Alaska Miners Association
New Mine Award in 2024**

BGT Received the Hard Hat Safety Award

Timeline

- 2008: Surface and subsurface landowner Native Village of Tetlin starts to explore its mineral potential
- 2009: Contango began early exploration work
- 2015: Royal Gold became a joint owner
- 2018: Preliminary Economic Assessment complete
- September 30, 2020: Kinross becomes 70% majority owner and operator; Contango 30%
- Kinross initiates Scoping Study and honors all past agreements
 - To include Community Support Agreement and road maintenance funding
- 2020: Renaming from Peak to Manh Choh
- 2020-23: 2500+ community engagements and 19 job fairs
- 2021: Drilling and environmental field programs to support permitting and feasibility study
- 2021: Acquired the Westmark building and began construction
- 2021: Commitment to construct elder home when mine ends
- 2022: Received the Alaska Mining Association Environmental Stewardship Award
- 2023: Permits secured
 - Orientation trips and limited loaded trips
- **2024: Ramp up trucking operations**
 - **Finish Mill mods**
 - **First Gold Pour in July**
 - **Completed two mill campaigns**

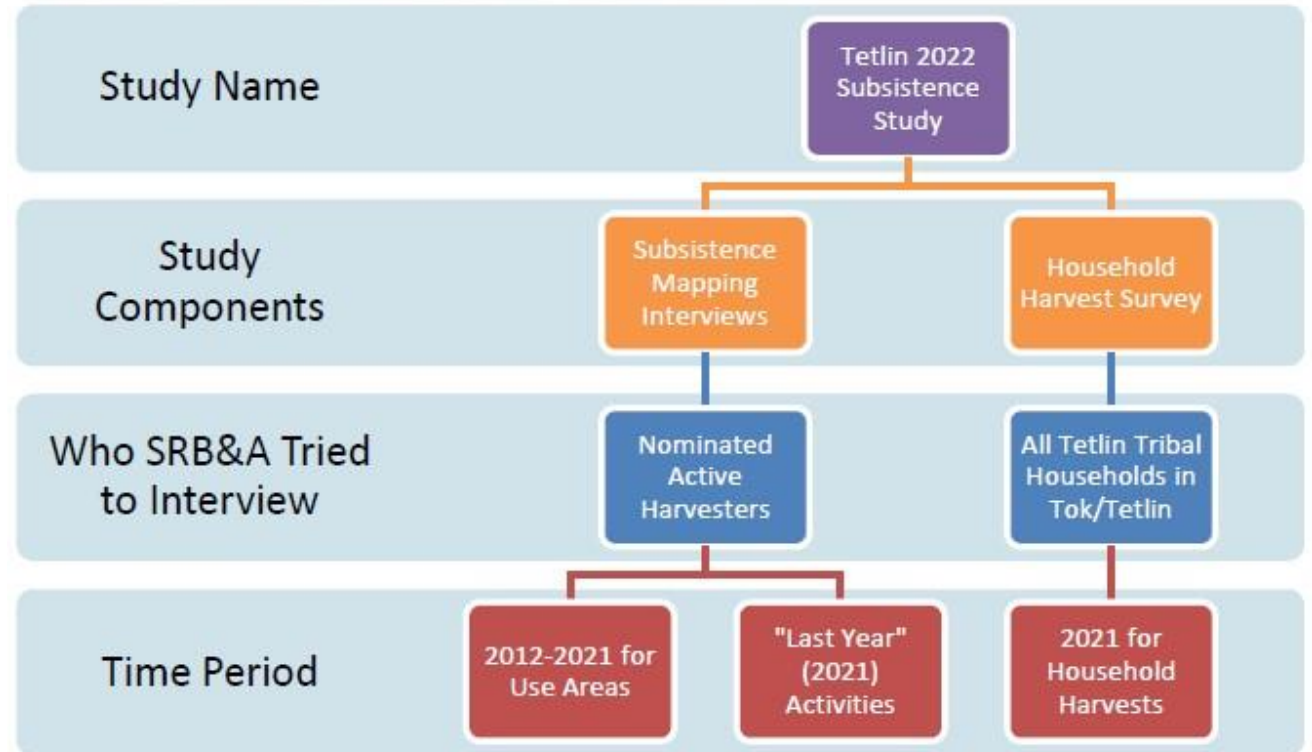
Annual Recap - First Gold Pour, Seeding, and more



Subsistence Mapping and Harvest Study

- In 2021, Kinross contracted a consultant, Stephen R. Braund & Associates (SRB&A) to conduct subsistence mapping interviews and household harvest surveys for the community of Tetlin.
 - A study of this nature had not been conducted in Tetlin since 1987-1988 time-period.
- The goal of the study is to provide baseline data that will support the Tetlin community and inform planning decisions regarding Manh Choh.
 - Information recorded: where the people of Tetlin conducted subsistence activities, the methods of transportation they used, the animals, fish, and plants they harvested, the timing of these activities, and other related aspects.

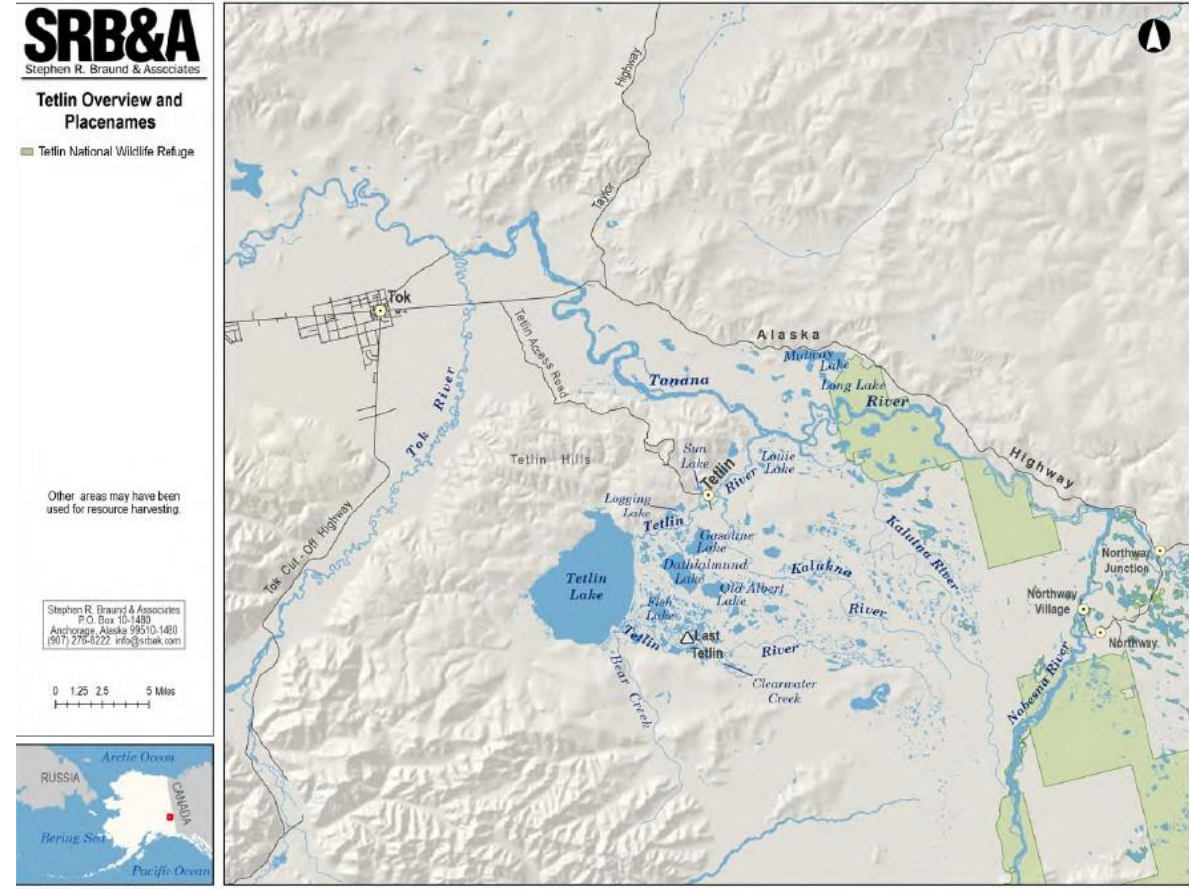
Figure 2: SRB&A Tetlin Subsistence Study Components



Source: SRB&A Tetlin Subsistence Mapping Interviews 2022

Subsistence Mapping and Harvest Study

- How can information collected during the Subsistence and Harvest Study be used at Manh Choh?
 - During the **reclamation** process:
 - What is reclamation? The process of restoring the land that mining has disturbed
 - Involves activities like reshaping the land, replacing topsoil, planting vegetation, and ensuring that the ecosystem is re-established to a stable and healthy state.
- Understanding how residents use the land is critical to analyzing how different projects and activities may affect those uses.
 - For example: the study revealed that moose is a high value resource for subsistence users, therefore reclamation of MC can focus on planting native seeds to promote the reestablishment of vegetation, creating a habitat that attracts moose and supports their natural movement through the area.



Water Management at Manh Choh

- Manh Choh has a robust **Water Management Plan**
This document details:

- How to contain surface water during operations through reclamation
- How to retain water within its natural catchments wherever possible
- How to return area to conditions consistent with its natural state
- How to minimize long-term exposure to excavated rock to the environment

- **Water Control**

- Runoff from rock stockpiles is collected in perimeter trench and managed
- Perimeter collection trench encircles the mine site- designed to intercept all surface water
- Not currently discharging water off site- all water is contained within active area
- During closure, waste rock will be segregated to backfill the pits and partially encapsulate the rock while limiting potential for seepage

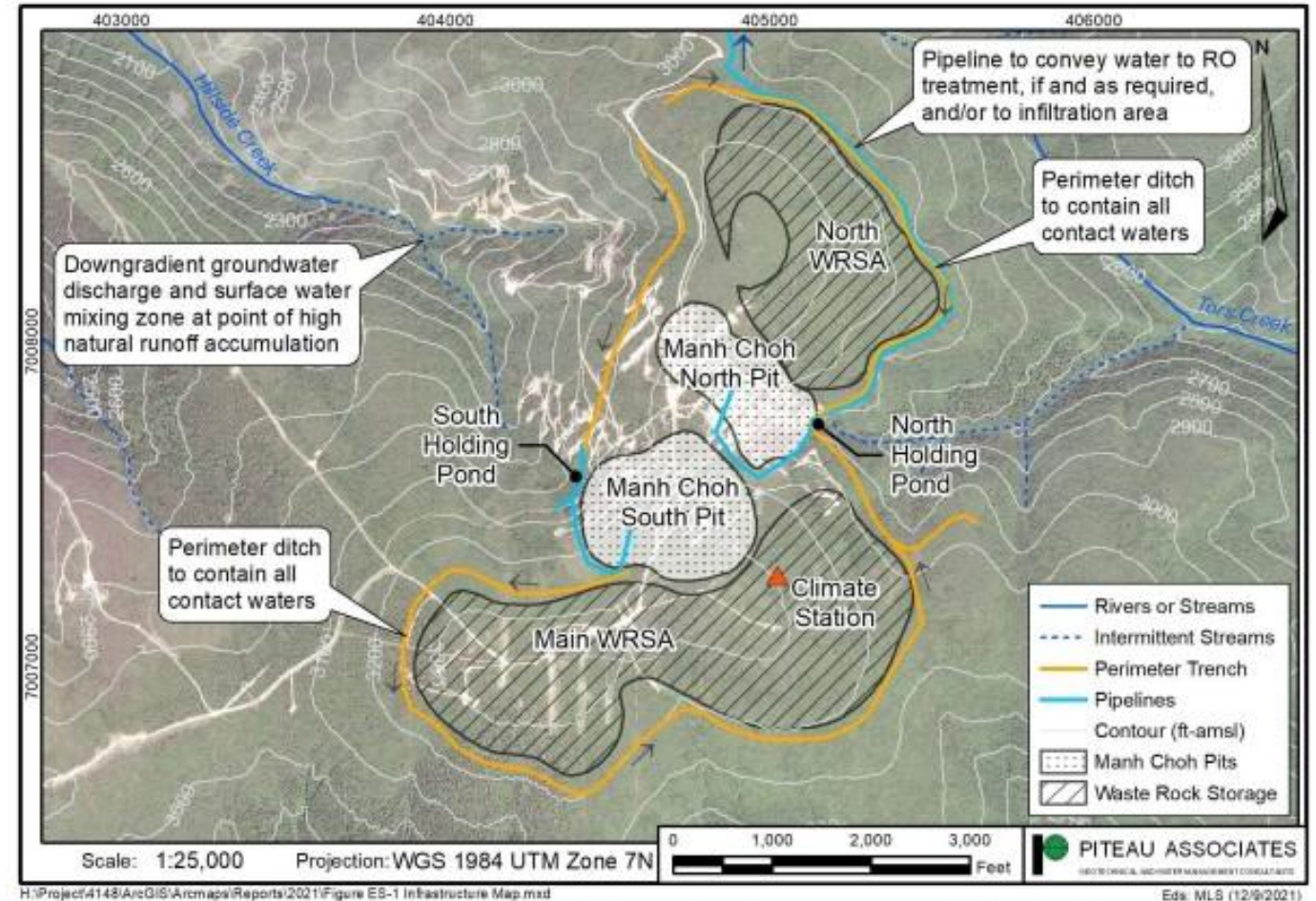


Figure 1. Layout of proposed Manh Choh facilities and water management infrastructure.

Workforce Development - Mining Career Pathway

A new mining career pathway started with the Alaska Gateway School District in January.

- Week 1 – Introduction to Mining in Alaska
- Week 2 – Exploration (Geology)
- Week 3 – Engineering and Feasibility
- Week 4 – Environmental and Permitting
- Week 5 – Careers in the Mining Industry
- Week 6 – Community Relations and Mining Operations/Milling/Reclamation
- Week 7 – Mining and Training Petroleum Services (MAPTS)
- Week 8 – Mine Tours (Manh Choh and Fort Knox)
- Week 9 – Alaska EXCEL (employability skills)
- Week 10 – MAPTS 2 week certification (18 or older)
- Summer Internships



	Total		
	Employees	Alaska	Local
Total Staff & Contractors			
Direct Hires - Kinross MC	58	53	31
Kiewit	118	52	33
NMS	25	22	6
BGT	212	139	29

New Simulator

KINROSS

Manh Choh
A JV with Contango ORE

UAF INTERIOR ALASKA CAMPUS
University of Alaska Fairbanks
COLLEGE OF RURAL AND COMMUNITY DEVELOPMENT



INTRODUCTION TO HEAVY EQUIPMENT AND WELDING CAREERS THROUGH STATE-OF-THE-ART SIMULATORS!

UAF INTERIOR ALASKA CAMPUS - TOK CENTER

Monday, February 10 & Tuesday, February 11
6:00 - 9:00 p.m.

Tuesday, February 18 & Wednesday, February 19
6:00 - 9:00 p.m.

Come learn how to use the new simulators and get exposure to heavy equipment operations and welding!

Tuition is paid for by Kinross Manh Choh.

SPACE IS LIMITED!* SIGN UP TODAY!

INTERESTED?

Please email Misty Walsh at mdwalsh2@alaska.edu or Crystal Wilson at cdwilson@alaska.edu, or call (907) 888-4547 to sign up for the non-credit class.

*Seating is limited to 10 people and will be filled on a first-come, first-served basis. Deadline to register is Friday, February 7, 2025.

KINROSS

Manh Choh
A JV with Contango ORE

Nana Management Service (NMS)



Remote Kitchen Helper Part-time/On-Call - Manh Choh

Tok, AK

🕒 Posted 4 days ago

Remote Cook's Helper - Manh Choh

Tok, AK

🕒 Posted 4 days ago

Remote Chef/Breakfast Cook Baker - Manh Choh

Tok, AK

🕒 Posted 11 days ago

Remote Appliance Technician- Manh Choh

Tok, AK

🕒 Posted 88 days ago

Remote Kitchen Helper - Manh Choh

Tok, AK

🕒 Posted 95 days ago

Remote Housekeeper Part-time/On-Call - Manh Choh

Tok, AK

🕒 Posted 95 days ago

Community Investment and Outreach

- Local Food Bank
- Alaska Resource Education (camp coming in June)
- Alaska Gateway School District
- Yukon Quest finish line
- Women in Kiewit- over \$1,500 raised along with a truck load of toys!
- Upcoming:
 - Tanacross Dog Races
 - Tok Race of Champions
 - Ducks Unlimited
 - Mine tours
 - June 23rd Tok Community BBQ
- Advisory Committee looking at how to use Campus
- Elder's Home



Community Investment and Outreach

- Tok Trick or Treat at the campus
- Sponsored Indigenous Appreciation game
 - tickets given away in Tok and Fairbanks
- Breast Cancer Awareness Month
 - Partnered with BCDC
- National American Indian and Alaska Native Heritage Month
 - Lesson from Priscella Joe
- Movember Men Health Awareness
 - Mental health, prostate health, and suicide prevention
- International Women's Day - you're invited!





International Women's Day

March 6th, 2025

12:00 pm - 1:00 pm

Manh Choh Campus

All are welcome!

- Lunch
- Trivia
- Prizes





BGT HAS A

**NEW
PHONE
NUMBER**

907.313.8612

BGTALASKA.COM