

Winter 2023

MANH CHOH NEWSLETTER

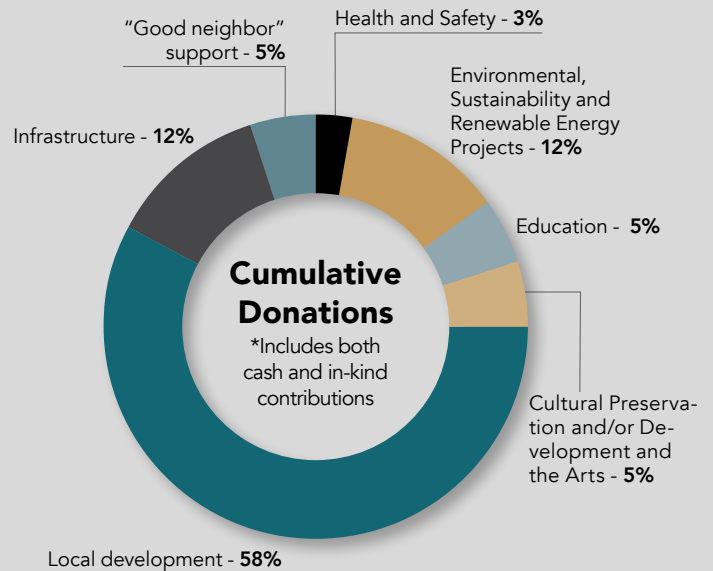
Manh Choh Business Optimization 2022

As the Manh Choh project continues to advance, we have made it a top priority to document local benefits to the community, including monitoring local business use and outreach to local communities.

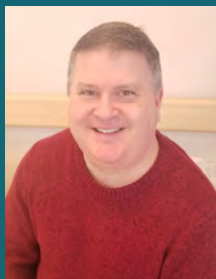
The project has a commitment to utilize Alaska and local-area businesses as much as possible. On average, 76% of all spending on the project is in support of businesses based in Alaska, and that number has increased each year (from 68% in 2020 to 79% in 2022). We also recognize the importance of using local businesses within the project area. In fact, 13% of total spending takes place within the local areas of Tok and Delta Junction, which is nearly the same amount as is spent in the entire lower 48 states.

In addition to steadily increasing local business use over time, Manh Choh representatives continue to regularly increase engagement and interactions with local communities. Since the third quarter of 2020, over 6,000 engagements with community members have been recorded at over 700 different engagement events, including one-on-one meetings, community events and other outreach opportunities. While many of these encounters are individual discussions between a community member and an employee, over 60 of these engagement events have been community meetings open to all members of the public. Over time, we have been able to increase the number of people that we meet with due to additional staffing and having a regular presence in the local communities.

We will continue to maintain a focus on supporting and benefiting the local communities while keeping community members well-informed of the project and its progress.



Employee Spotlight: Doug Ferguson



Welcome Doug Ferguson, the new Manh Choh Senior Human Resources Generalist! He reports to Meg Smith, HR Manager.

Doug spent most of his early years

in Mississippi but went to high school in Chattanooga, Tennessee, where he met Stephanie, his wife of 31 years.

After high school, he earned a Bachelor of Arts in English from Delta State University and later graduated from law school at the University of Mississippi. In the early 2000s, Doug and Stephanie became restless and decided together to move to Alaska.

Not long after relocating to the Kenai Peninsula, Doug got his start in Human Resources recruiting for an agency that specialized in staffing mining and oil and gas projects in Alaska. Since then, he has supported projects from Juneau

to Prudhoe Bay, and several points in between.

When he's not working, Doug enjoys fishing, hiking and spending time with Stephanie and the two of their three children who still live in Alaska: Matt, a teacher in the Anchorage School District, and Phoebe a hairstylist. Their other son, Ian, is a software engineer in Tucson, Arizona.

Community Member Elder Spotlight: Theda Joe

By Tiffany Silas



Theda Joe is an 83-year-old respected elder from Tetlin. The village she grew up in is rich in cultural practices passed down through her parents, elders and close

family members. She continues to live a subsistence lifestyle.

Theda has retained many traditional customs, such as speaking her family's native language, hunting, fishing, picking berries and making birch baskets. She has a wealth of knowledge living off the land. She recalls her father trapping animals to skin, stretch, dry and sell.

Theda and her family relied on a subsistence lifestyle, and she grew up in a time when the Upper Athabascans were highly nomadic. They would travel in small groups to harvest fish, hunt and trap.

She enjoys the summers at Last Tetlin Fish Camp where she can sit and cut fish to hang in the smokehouses to prepare for the long winter months. Her favorite memories are teaching others how to harvest materials to make birch baskets, cutting fish at Last Tetlin Culture Camp and harvesting ground roots.

When she was growing up in the 1960s, she would help care for elders by cleaning their houses, washing dishes, stacking wood and cooking for them. Later she became the alternate Health Aide for Tetlin Village, a vital role she held for several years.



Kinross Alaska Celebrated American Indian and Alaska Native Heritage Month

November was American Indian and Alaska Native Heritage Month in recognition and celebration of the diverse indigenous cultures, traditions and art of America's first people.

Fort Knox and Manh Choh both held potlatches with cultural food for employees to try, including moose chili, salmon, salmon dip and blueberry akutaq. During the luncheon, two videos were played that educated attendees on the Alaska Native Claims Settlement Act and Tetlin's Culture and Wellness Camp hosted at Last Tetlin. A special logo was created for the month and added to email signatures and messaging and converted into a hard hat sticker for employees.

The sites also purchased local native art and crafts from the Fairbanks and Tok areas and sponsored a drawing for employees. Items were on display during the month and were paired with descriptions of where the pieces were made. Items included beaded mittens, birch baskets, bone earrings and porcupine quill hair clips.

Additional language education was provided to both sites on digital displays. Common words for salmon, mittens, fish



Karol Amorim, Shane Parrow, Trevor Herd, Doreen Mark and Mike Blusson gather to share a traditional meal.

trap, dip net, moose and fireweed were translated from Upper Tanana Athabascan (Tetlin) into English. Both sites are working on creating land acknowledgments to honor Alaska's first people according to the region where each site is located.

MAPTS Training for Tetlin Tribal Member



Allen Agnes Jr. from the village of Tetlin graduated from the Mining and Training Petroleum Service (MAPTS) new miner training program on November 21, 2022.

The four-week surface and underground training program provided Allen with a Mine Safety and Health Administration certification, employability skills,

leadership, surface and underground heavy equipment operation, mining terminology and safety.

We are very proud of his accomplishments and wish him the best in his future endeavors.

Beyond Zero Harm, ESG and SDGs

By Karol Amorim



The Kinross Manh Choh Project is focused on sustainable development and social responsibility. Our actions go beyond mining. We respect the

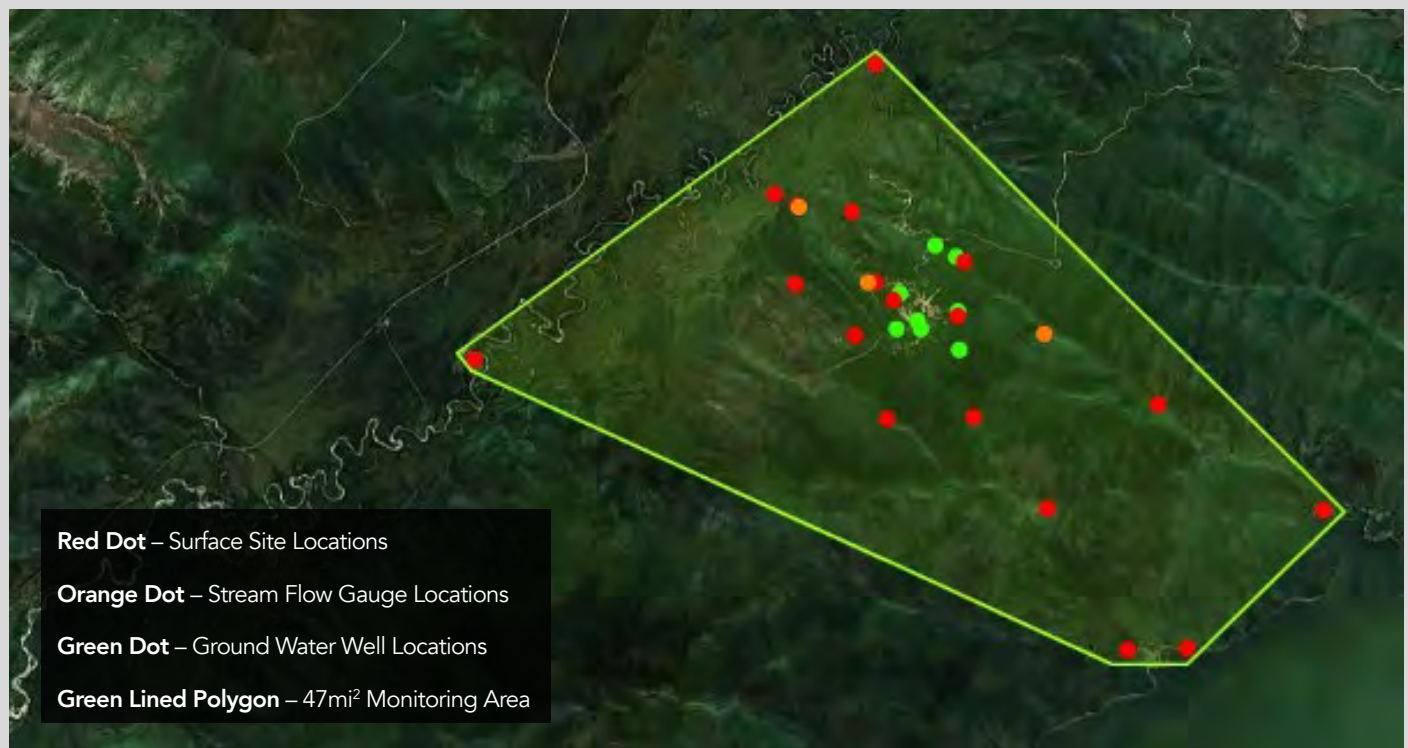
people involved in the project, support development through training and local hiring and promote market growth by purchasing services and products locally.

Engagement with local stakeholders and active listening help us understand the needs of the community, creating a positive relationship between the project and the surrounding areas.

We put an emphasis on environmental stewardship, diversity and inclusion and are committed to a legacy approach.

All these values are aligned with the United Nations Sustainable Development Goals that are directly related to the practice of ESG (Environmental, Social and Governance). Following these sustainable goals is a beneficial practice for all companies, and helps them be a positive contributor in their host communities.

To learn more about the **17 Sustainable Development Goals**, visit: sdgs.un.org/goals



Environmental Update: Water Sampling

Initial water sampling began when the project's previous operator was hired as a contractor in the beginning stages of exploration in 2012. They began collecting samples to identify a baseline starting with five carefully chosen sample locations. As the project expanded, more sample sites were added to the drainages with tributaries entering both the Tok River and Big Lake.

In February of 2021, water sample duties were passed to the Manh Choh project. Since then, the environmental department has added a few more sites

to ensure every outlet for potential discharge is being monitored. Our team has worked tirelessly collecting samples from the 18 surface sites, three stream flow gauges and eight monitoring wells, for a total of 29 current monitoring locations. Environmental technicians collected water samples from all sample sites three times per month for a year and a half, ensuring the most accurate baseline data was gathered.

The total area being monitored covers roughly 47 square miles surrounding the future Manh Choh mine site, ensuring

that the water quality remains at the highest standards. Basic data collected at each sample location includes pH, conductivity, water temperature, water color and water clarity. Because the sample sites are so widely spread, access is limited to helicopter for the majority of surface water samples collected. The remainder of sample sites require access by a 4x4 vehicle and a fair amount of hiking across variable terrain.

Road Construction Update



The Tetlin Twin Road has now advanced past mile 7.5 from the Alaska Highway toward the future mine. Work has continued on a 24/7 basis successfully into winter without injury or incident.

The Tetlin Twin Road is in use by all Manh Choh traffic from the new intersection (existing village road and new Tetlin Twin Road) onward towards the future mine. This allows village traffic to continue using the private, dirt road as they have always done while reducing interactions with Manh Choh traffic. Opening the new section of the Tetlin Twin Road from mile 0.75 onward to the mine is another positive step towards maintaining a safe environment for all Tetlin Village residents and visitors along with Manh Choh personnel, as the village road is not a public road built for commercial use.

The last section of road construction will be from the new entrance from the Alaska Highway onto the Tetlin Twin Road. Manh Choh received the driveway permit in November 2022, allowing this construction work to be completed. Although the roadway is now complete and usable, it will remain closed until a new security checkpoint is installed in early 2023 and staffed 24/7 by project personnel.

Camp Update



In 2022 Manh Choh purchased a closed hotel property with the intention

of housing personnel during mining operations. The goal was to refurbish the property and expand the facilities to house 175 personnel who do not live locally.

A contractor worked through 2022 to refurbish and winterize (for year-round use) the existing facilities on the property (kitchen, dining, bedrooms, etc.) and install additional camp modules. All work was completed by the end of 2022.

Entering the 2023 construction season, a separate contractor was hired to operate

the Manh Choh Camp. The contractor is responsible for various services, including catering, maintenance, accommodation management and janitorial services on the property. The camp will begin housing personnel this coming April 1 and will continue housing personnel until mining operations are complete. While the camp is utilized, there will be a zero tolerance for alcohol and drugs and no guests will be permitted to stay.

Alaska EXCEL



Meg Smith standing with Bridgette Thomas and Dustin Captain.

We are proud to announce that two Tetlin High School students attended Alaska EXCEL 10/11 this fall. Alaska EXCEL provides rural/remote middle and high school students with supplementary academic, transitional life skills and career exploration opportunities, all of which promote high school completion and transitional success.

Through applied, project-based learning, each student increases their knowledge in a wide variety of areas, including academics (language arts, math and science), leadership, character, employability skills, life skills, postsecondary and career search and urban familiarization. Alaska EXCEL students graduate from high school and transition into adulthood with a viable Personal Learning & Career Plan (PLCP), Occupation Endorsement Certificates (OEC), national career readiness

certificates and college credits applicable to a specific Program of Study (PoS).

It was an awesome experience for both students. They learned so much during their sessions at Alaska Pacific University in Anchorage, including Alaska Career Information System (AKCIS) Workplace Employability Skills and AKCIS Reality Check. They completed job applications and learned how to write a resume and a cover letter, participated in mock interviews, learned about healthy lifestyles and nutrition, drug and alcohol awareness and prevention and suicide awareness. Several students even received their drivers permit.

We are very proud of both Dustin and Bridgette!

Investing in Our Community



Delta Emergency Services

This winter, Manh Choh was able to support the City of Delta and those who use a fair portion of the Richardson highway corridor by providing the resources necessary to keep emergency services up to date. It is important to us to engage with and invest in all communities along the corridor just as we have in the Fairbanks area for over 27 years. Our investment will go to emergency services needs that have been on the city's needs list for years, and we are happy to partner with Delta to start to address those longstanding needs.



Tok Dog Musers' Association

Since 1958, the Tok Dog Musers' Association (TDMA) has been a pillar of the Tok community. The TDMA hosts events such as the Tok Race of Champions, which are attended by residents from surrounding villages such as Tanacross, Tetlin, Northway, Dot Lake, Eagle and Mentasta. Additionally, the TDMA works to provide healthy community activities, trail maintenance, spay and neuter clinics and local holiday craft bazaars. As a non-profit organization, the TDMA is administered by an all-volunteer board and depends on the donated time, energy, and equipment of its members and the community to continue the great work they do. Recently, Kinross Manh Choh was able to sponsor the annual Tok Dog Musers Association banquet, which is not only a great fundraiser for the organization but also a fun family event where mushers and the community at large can come together.



Tok High School Boys Basketball

We supported the Tok High School Boys Basketball program this year to ensure the team could travel to Anchorage and Cordova as part of their regular travel schedule. With our donation covering travel expenses, meals and tournament expenses, the team could focus on the games ahead.

Tok Junior High Basketball

We supported the Tok Junior High Basketball program with a donation that would provide game referees for 20 games. Beyond learning the rules, regulations and sportsmanship associated with the game, this support allowed the program to use other funding sources for new uniforms and equipment.



Tok Youth Hockey

We supported the Tok Youth Hockey program with a donation that could be used to sponsor their Community Calendar and items for their raffle ticket fundraiser.

PROJECT TIMELINE

Gold is Discovered

Economic Viability

The Preliminary Economic Assessment (PEA) was published in 2018. An updated scoping study is complete.

The objective of the scoping study was to confirm the economic viability of the potential mining project and refine development plans.

Scoping

This scoping study provided more information on the production plan, location of infrastructure, environmental mitigation requirement, capital cost as well as initial estimates of employment numbers.

Complete

We Are Here!

Development, closure, and reclamation plans will be presented as part of detailed permit applications.

The state and federal government will carefully review the project's proposed plans. If the plans are accepted, permits will be issued before operations can begin.

The public will be involved during this process to provide input.

Targeting to complete in 2022.

Detailed Design & Construction

Once the project team has received approvals, the project will move into detailed engineering, equipment procurement, construction, and commissioning.

A bond in the amount of the cost of reclamation will be posted before production. Topsoil will be saved for later reclamation.

Targeting to complete in 2023.

Production

This project will benefit local residents and will contribute to the state economy by providing additional employment opportunities and benefits. Additionally, preliminary estimates for the project include a total life of mine production, starting in 2024, of approximately 1 million recovered gold ounces at an average mining grade of approximately six grams per ton.

Targeting to start in 2024.

Reclamation & Closure

Regrading, topsoil replacement, seeding and planting will start as soon as each area has been mined.

Bond will be released once the reclamation is complete.

PEA

Scoping Study

Feasibility Study and Permitting

Project Execution

Operations

Reclamation and Closure

Continual Monitoring & Public Engagement



Bill Lance, John Burnham and Alain Burnham from Kinross Manh Choh local vendor Northern Energy.



"We're excited to be a part of the community and the next chapter for Tok. Kinross will give that chapter a nice boost."

- Matt & Brette White, Burnt Paw

KINROSS

Manh Choh

A JV with Contango ORE

Mailing Address:

P.O. Box 9,
Tok, Alaska 99780

Physical Address:

1314.3 Alaska Hwy,
Tok, Alaska 99780